



## Silver Sport 2 Wheelchair

### Dual axle

HCPCS: K0001 / K0002

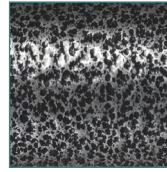


FIGURE A

- Powder-coated silver vein steel frame (Figure A)
- Embossed vinyl upholstery is durable, lightweight, attractive and easy-to-clean
- Urethane tires mounted on composite wheels provide durability and low maintenance
- 8" front casters, adjustable in three positions
- Padded armrests provide additional comfort
- Carry pocket on backrest provides additional convenience
- Comes with swing-away footrests or elevating leg rests with tool-free adjustable length riggings
- Plastic foot plates with heel loops on footrests
- Comes with push-to-lock wheel locks

#### PRODUCTS

#### Description

SSP216FA-SF	Silver Vein, 1/cs
SSP216FA-ELR	Silver Vein, 1/cs
SSP216DDA-SF	Silver Vein, 1/cs
SSP216DDA-ELR	Silver Vein, 1/cs
SSP216DFA-SF	Silver Vein, 1/cs
SSP216DFA-ELR	Silver Vein, 1/cs
SSP218FA-SF	Silver Vein, 1/cs
SSP218FA-ELR	Silver Vein, 1/cs
SSP218DDA-SF	Silver Vein, 1/cs
SSP218DDA-ELR	Silver Vein, 1/cs
SSP218DFA-SF	Silver Vein, 1/cs
SSP218DFA-ELR	Silver Vein, 1/cs
SSP220DDA-SF	Silver Vein, 1/cs
SSP220DDA-ELR	Silver Vein, 1/cs
SSP220DFA-SF	Silver Vein, 1/cs
SSP220DFA-ELR	Silver Vein, 1/cs

#### SPECIFICATIONS

#### Description

Width Open with 16" Seat	24"
Width Open with 18" Seat	26"
Width Open with 20" Seat	28"
Width Closed	12.5"
Height	36"
Seat-To-Floor Height	17.5" - 19.5"
Back Height	16"
Seat Depth	16"
Length with Rigging	42"

SPECIFICATIONS	Description
Product Weight with 16" Seat	40 lbs.
Product Weight with 18" Seat	41 lbs.
Product Weight with 20" Seat	42 lbs.
Carton Shipping Weight with 16" Seat	48 lbs.
Carton Shipping Weight with 18" Seat	49 lbs.
Carton Shipping Weight with 20" Seat	50 lbs.
Weight Limit with 16" Seat	250 lbs.
Weight Limit with 18" Seat	300 lbs.
Weight Limit with 20" Seat	350 lbs.
Warranty	Limited 3 Years

ACCESSORIES	Description
STDS806	Anti-Fold Bar, 1/ea
STDS833N	Anti-Tippers With Wheels Black, 1/pr
STDS818	Anti-Tippers without Wheels, Chrome, 1/pr
WASR	Limb Support, Right, 1/ea
WASL	Limb Support, Left, 1/ea
STDS831	Heel Loops, 1/bx
STDS850	Seat Belts, Auto-Clasp Type Closure, 1/ea
STDS851	Seat Belts, Hook and Loop Fastener Type Closure, 1/ea
STDS855	Seat Belts, Auto-Clasp Type Closure, Bariatric, 1/ea
STDS856	Seat Belts, Hook and Loop Fastener Type Closure, Bariatric, 1/ea
STDS820	Telescoping IV Pole Attachment, 1/ea
STDS862	Universal Forward Stabilizer, 1/pr
STDS801GT	Wheel Lock Extension, 1/ea
STDS1034	Wheelchair Cane/Crutch Holder, 1/ea
STDS SSP-AA	Amputee adapters for Silversport 2, 1/pr
STDS SSP2-PL	Lock Brakes (left), 1/ea
STDS SSP2-PR	Lock Brakes (right), 1/ea

PARTS	Description
STDS806	Anti-Fold Bar, 1/ea
STDS833N	Anti-Tippers With Wheels Black, 1/pr
STDS818	Anti-Tippers without Wheels, Chrome, 1/pr
STDS836	Chart Carry Pocket, 1/ea
STDS831	Heel Loops, 1/bx
WASR	Limb Support, Right, 1/ea
WASL	Limb Support, Left, 1/ea
STDS823	Overhead Anti-Theft Device, 1/ea
STDS850	Seat Belts, Auto-Clasp Type Closure, 1/ea
STDS851	Seat Belts, Hook and Loop Fastener Type Closure, 1/ea
STDS855	Seat Belts, Auto-Clasp Type Closure, Bariatric, 1/ea
STDS856	Seat Belts, Hook and Loop Fastener Type Closure, Bariatric, 1/ea
STDS820	Telescoping IV Pole Attachment, 1/ea
STDS803	Universal Oxygen "E" Cylinder Holder, 1/ea
STDS804	Universal Oxygen "E" Cylinder Holder with IV Pole Attachment, 1/ea
STDS801GT	Wheel Lock Extension, 1/ea
STDS1034	Wheelchair Cane/Crutch Holder, 1/ea
STDS SSP-AA	Amputee adapters for Silversport 2, 1/pr
WB 8036	
STDS3J4606	
STDS3J4608	
STDS3J4602	
STDS3J4616	
STDS3J4618	